

Souber Tools
Souber Tools

5 minute
MORTICER

The choice of locksmiths

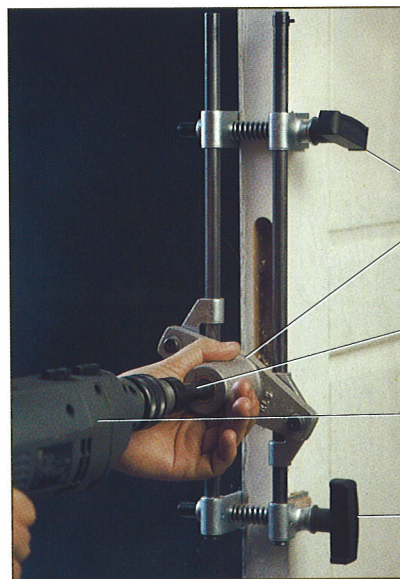


Perfect lock fitting every time with the DBB Morticer

Used and acclaimed by locksmiths and builders alike, the DBB morticer has proved itself an invaluable tool for anyone regularly fitting mortice locks.

Features

- Cuts a mortice for the body and face-plate
- Fast and accurate, saves you time and money.
- Snap-in cutters.
- The self-centring jig cuts marking-up time.
- Vertical guides, height and depth stops mean that you cannot overrun the cut area.



Top clamp and height stop

Self-centring housing

Shaft with depth stop

Use a power drill (not included) with a 1/2" chuck and running speed of 2,000-3,000rpm.

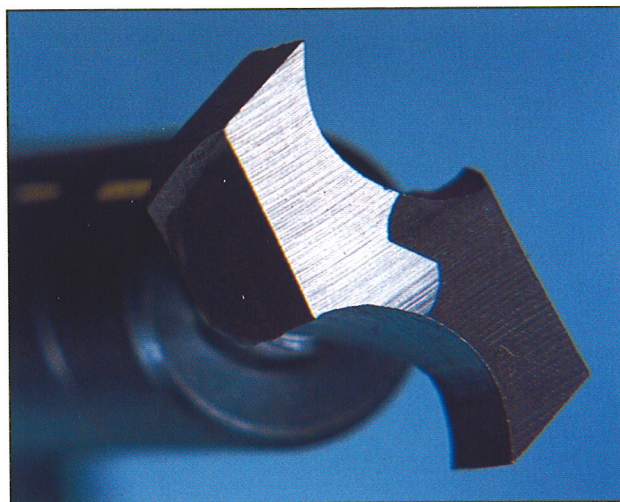
Bottom clamp and lower stop

Quick-change precision cutters

The unique cutter design means that the cutters can be changed and fitted in seconds whilst the jig is in position on the door.

The specifically designed cutting edges are chisel shaped to cut deep without clogging, with a standard shaft, to a depth of 90-100mm.

The high speed steel cutters can be sharpened on an oil stone, so there's no costly cutter grinding required.



Users comments ...popular and reliable

This is what people say about the DBB Morticer:

"... one of my better purchases for the toolbox, and one I couldn't do without."

Jack White, Master Locksmith of Herne Bay, Kent, UK

"This morticer, is reasonably priced and must be an indispensable tool for all lock fitters."

Security Retailer Magazine

"... it leaves nothing to chance, when I use it I know it will give me a perfect result."

Paul Etheridge, Master Locksmith, London

"This tool makes life much easier."

Carroll Mann Manton Security, Kowloon

"Makes the work process smooth, save time and money."

Tung Fat Ho Building Materials, Hong Kong

The side slide attachment for offset morticing

Available as a complete kit, or as an upgrade for your standard morticer, this attachment has been developed for European-style rebated doors with off-centre mortices.

Using the same vertical bar & clamp system, the attachment has a side sliding drive shaft housing, so that mortices can be cut off-centre.

This flexibility allows you to cut hinge recesses and the mortice for the strike plate on door frames less than 95mm thick.

Aluminium Doors

With specially designed cutters, aluminium doors present no problems for the solidly constructed DBB Morticer.

Four cutter sizes provide you with all the range you need to cut a lock slot in an aluminium door.

You must always use the appropriate safety equipment when cutting metals.



Included in the price

Every morticer comes complete with a heavy duty case, the jig of your choice, self centring or adjustable, stops, drive shaft, three wood cutters and the instruction manual.

Additional and special accessories

Any part of the morticer can be replaced individually and in addition we can offer 14 sizes of wood cutters, four sizes of aluminium cutters and the special kits for non-standard locks and applications.

User friendly instructions

Our easy to follow instruction manual will help you get the best out of the DBB morticer with clear step-by-step illustrations.

Technical Data

Drill requirements – 13mm ($\frac{1}{2}$ ") Chuck, recommended speed 2,000 - 3,000rpm

Standard shaft depth – 90mm (100mm without stop)

Long shaft depth – 170mm (180mm without stop)

Door thickness Standard Morticer – max 55mm

Door thickness Standard Morticer with special housing – max 80mm

Door and Frame Width Offset Morticer – max 95mm

NEW PRODUCT

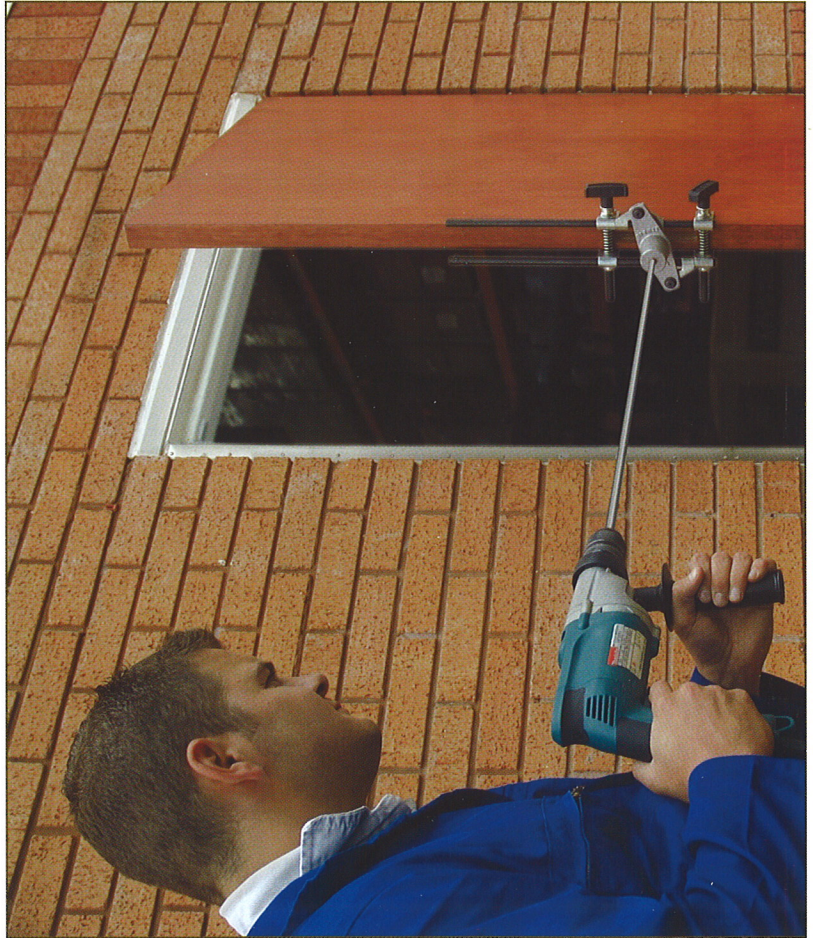
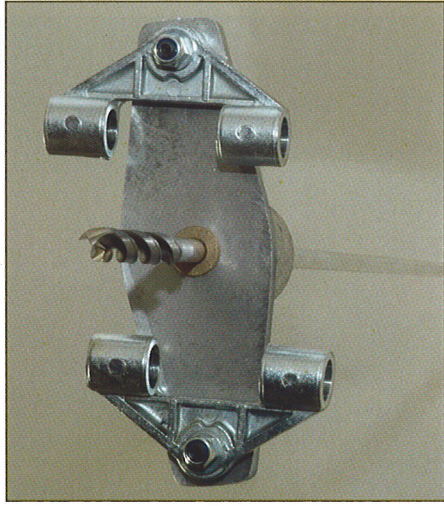
Long drilling kit

The **LONG DRILL KIT** has been specifically designed for the easy installation of electric lock cables through wooden doors, from lock to hinge.

After cutting the lock mortice, the long drill housing kit converts a standard morticer into a guide frame for the long drill system.

Special geometry helps to keep the cutter 'on line' with minimal effort.

Leading in its field, the **LONG DRILL SYSTEM** is quick, accurate and easy to use.



Morticer

Description	Order Ref
Standard Morticer complete with 3 cutters (WB19, WB22 & WB25)	DBB1
Offset Morticer complete with 3 cutters (WB19, WB22 & WB25)	DBB2

Long Drill Kit

Description	Order Ref
Long drill housing kit	DBB/HK/LD
10mm x 950mm long, wood drill	10950
10mm x 1250mm long, wood drill	101250

Small Bore Kit

Description	Order Ref
Housing kit (inc spanners)	DBB/SB/HK
Shaft only	DBB/SBS
Wood Cutter 13.2mm	WB13
Wood Cutter 14.6mm	WB15

Wood Cutters

Size	Order Ref
5/8" (16.2mm)	WB16
11/16" (17.5mm)	WB18
3/4" (19.0mm)	WB19
(20.0mm)	WB20
13/16" (20.6mm)	WB21
7/8" (22.2mm)	WB22
(23.0mm)	WB23
15/16" (23.8mm)	WB24
1" (25.4mm)	WB25
1 1/16" (27.0mm)	WB27
1 1/8" (28.6mm)	WB29
1 1/4" (31.8mm)	WB32

Aluminium Cutters

Size	Order Ref
5/8" (16.2mm)	AB16
3/4" (19.0mm)	AB19
1" (25.4mm)	AB25
1 1/4" (31.8mm)	AB32

Spare Parts

Description	Order Ref
Offset Housing Kit	DBB/HK/OS
Housing Kit c/w fixings (Doors up to 55mm)	DBB/HK
Housing Kit c/w fixings (Doors 55mm+)	DBB/HK/S
Standard Shaft	DBB/SS
Long Shaft	DBB/LS
6 Set Screws & Allen Key	DBB/GS
Plastic Carrying Case	DBB/CC
Canvas Carry Bag	DBB/CB

Souber Tools

Unit 4 Millennium Court, Buildwas Road, Neston, Wirral CH64 3UZ, UK

Tel: 0151 353 1199 Fax: 0151 353 0331

email: info@soubertools.com web: www.soubertools.com